

WHEN RECORDED RETURN TO:
 WHITE BEAR ANKELE TANAKA & WALDRON
 2154 East Commons Avenue, Suite 2000
 Centennial, CO 80122

The Glen Metropolitan District No. 1
 (El Paso County, Colorado)

SPECIAL DISTRICT PUBLIC DISCLOSURE

Pursuant to § 32-1-104.8 C.R.S.

Name of District:	The Glen Metropolitan District No. 1 ("District")
Powers of the District:	Water services, wastewater services, street improvements, traffic controls and signage, drainage improvements, mosquito control, and park and recreation facilities, subject to the limitations contained in the District's Service Plan.
Service Plan:	The District's Service Plan, which can be amended from time to time, includes a description of the District's powers and authority. A copy of the District's Service Plan is available from the Division of Local Government.
	The Glen Metropolitan District No. 1 is authorized by Title 32 of the Colorado Revised Statutes to use a number of methods to raise revenues for capital needs and general operations costs. These methods, subject to the limitations imposed by section 20 of Article X of the Colorado Constitution, include issuing debt, levying taxes, and imposing fees and charges. Information concerning directors, management, meetings, elections and current taxes are provided annually in the Notice to Electors described § 32-1-809(1), C.R.S., which can be found at the District office, on the District's web site, on file at the Division of Local Government in the State Department of Local Affairs, or on file at the office of the clerk and recorder of each county in which the special district is located.
District Boundaries:	A map of the District's boundaries is attached hereto as Exhibit A. Please note that the District's boundaries may change from time to time. Please contact the District for the latest information.
Disclosure Replaces and Supersedes Prior Disclosures:	Note that this disclosure document supersedes and replaces any prior disclosures recorded by the District.

EXHIBIT A
District Boundary Map

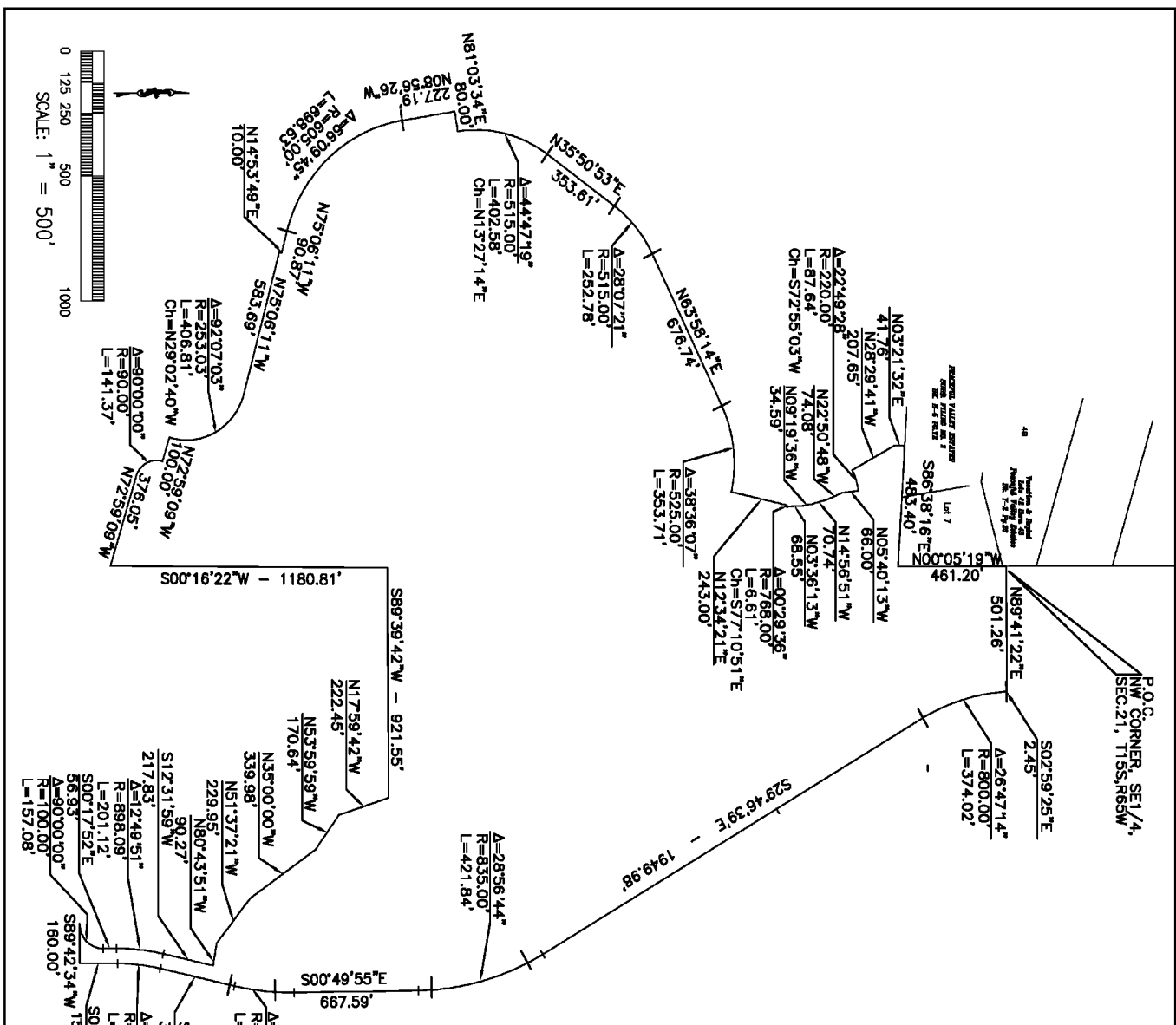
EXHIBIT "A"

LAND DESCRIPTION EXHIBIT: METRO WATER DISTRICT #1

A portion of the North One-half (N1/2) of Section 28, and a portion of the South One-half (S1/2) of Section 21, all in Township 15 South, Range 65 West of the 6th P.M., County of El Paso, State of Colorado and being more particularly described as follows:

Beginning at the Northwest corner of the Southeast One-quarter (SE 1/4) of said Section 21, said point being also an angle point on the Southeastly line of Lot 48, Vacation and Replat of Lots 42 thru 48, Peculiar Valley Estates, as recorded in Plat Book 1-2 of Page 26 of the records of the Clerk and Recorder's Office, of said County; Thence N89°41'22"E, along the North line of said Southeast One-quarter (SE 1/4) of Section 21, a distance of 501.26 feet; Thence S02°59'25"E, a distance of 2.45 feet; Thence along the arc of a curve to the left having a central angle of 26°47'14", a radius of 800.00 feet, an arc length of 374.02 feet; Thence S29°46'39"E, a distance of 1949.98 feet; Thence along the arc of a curve to the right having a central angle of 28°56'44", a radius of 835.00 feet, an arc length of 421.84 feet; Thence S00°48'55"E, a distance of 667.59 feet; Thence along the arc of a curve to the right having a central angle of 13°21'54", a radius of 835.00 feet, and an arc length of 194.77 feet; Thence S12°31'59"W, a distance of 302.98 feet; Thence along the arc of a curve to the left having a central angle of 12°49'51", a radius of 838.09 feet, an arc length of 187.68 feet; Thence S00°17'52"E, a distance of 156.95 feet; Thence S89°42'34"W, a distance of 160.00 feet; Thence along the arc of a non-tangential curve to the left having a central angle of 90°00'00", a radius of 100.00 feet, an arc length of 157.08 feet; Thence N00°17'52"W, a distance of 56.93 feet; Thence along the arc of a curve to the right having a central angle of 12°49'51", a radius of 838.09 feet, an arc length of 201.12 feet; Thence N12°31'59"E, a distance of 217.83 feet; Thence N80°43'51"W, a distance of 90.27 feet; Thence N51°37'21"W, a distance of 229.95 feet; Thence N35°00'00"W, a distance of 339.98 feet; Thence N53°59'59"W, a distance of 170.64 feet; Thence N17°59'42"W, a distance of 222.45 feet; Thence S89°39'42"W, a distance of 921.55 feet; Thence S00°16'22"W, a distance of 1180.81 feet; Thence N72°59'09"W, a distance of 376.05 feet; Thence along the arc of a curve to the right having a central angle of 90°00'00", a radius of 90.00 feet, an arc length of 141.37 feet; Thence N72°59'09"W, a distance of 100.00 feet; Thence along the arc of a non-tangential curve to the left having a central angle of 92°07'03", a radius of 253.03 feet, an arc length of 406.81, whose chord bears N29°02'40"W, a distance of 34.59 feet; Thence N75°06'11"W, a distance of 583.69 feet; Thence N14°53'49"E, a distance of 10.00 feet; Thence N75°06'11"W, a distance of 90.87 feet; Thence along the arc of a curve to the right having a central angle of 66°09'45", a radius of 805.00 feet, an arc length of 698.63 feet; Thence N08°56'26"W, a distance of 227.19 feet to a point on the southerly line of The Glen at Widefield Subdivision Filing No. 2; Thence continuing along the easterly line of said The Glen at Widefield Subdivision Filing No. 2 as recorded at Reception No. 201107269 of the records of the office of the Clerk and Recorder of said County, and the southerly line of The Glen at Widefield Subdivision Filing No. 1 as recorded at Reception No. 201107265 of said records, said lines being also the southeasterly right of way line of Woyfrater Drive, the following fifteen (15) courses:

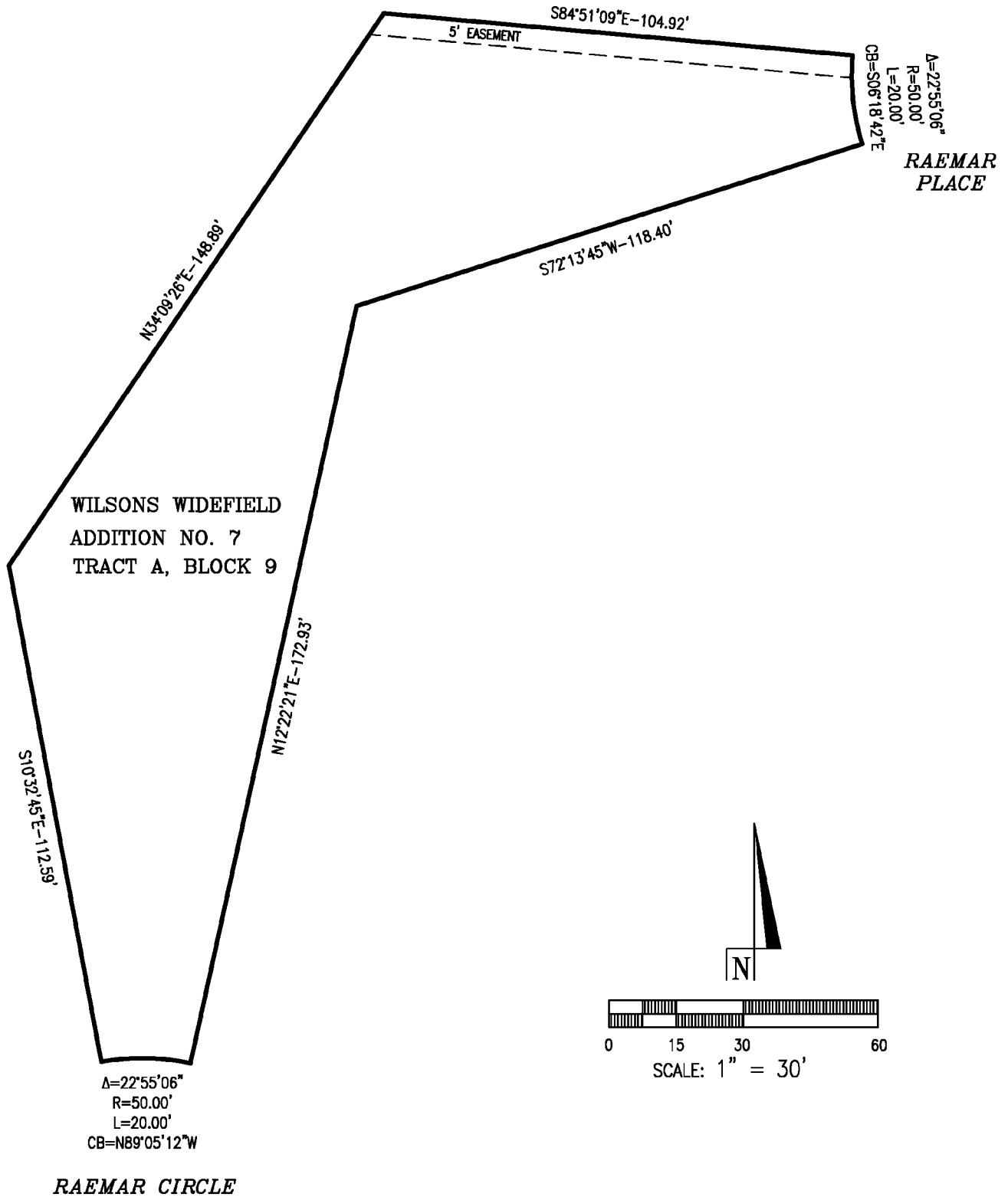
- 1) N81°03'34"E, a distance of 80.00 feet;
 - 2) Thence along the arc of a non-tangential curve to the right having a central angle of 44°47'19", a radius of 515.00 feet, an arc length of 402.58 feet, whose chord bears N32°27'14"E;
 - 3) Thence N35°50'53"E, a distance of 353.61 feet;
 - 4) Thence along the arc of a curve to the right having a central angle of 28°07'21", a radius of 515.00 feet, an arc length of 252.78 feet;
 - 5) Thence N63°56'14"E, a distance of 676.74 feet;
 - 6) Thence along the arc of a curve to the right, having a central angle of 38°56'07", a radius of 525.00 feet, an arc distance of 353.71 feet;
 - 7) Thence N12°34'21"E, a distance of 243.00 feet;
 - 8) Thence along the arc of a non-tangential curve to the right, having a central angle of 00°29'36", a radius of 768.00 feet, a distance of 6.61 feet, whose chord bears S77°10'51"E;
 - 9) Thence N03°36'13"W, a distance of 68.55 feet;
 - 10) Thence N09°19'36"W, a distance of 34.59 feet;
 - 11) Thence N14°56'51"W, a distance of 70.74 feet;
 - 12) Thence N22°50'48"W, a distance of 74.08 feet;
 - 13) Thence N05°40'13"W, a distance of 66.00 feet;
 - 14) Thence along the arc of a non-tangential curve to the left, having a central angle of 22°49'28", a radius of 220.00 feet, an arc distance of 87.64 feet, whose chord bears S72°55'03"W;
 - 15) Thence N03°21'32"E, a distance of 41.76 feet to a point on the southerly line of Peaceful Valley Estates No. 2, as recorded in Plat Book H-5 at Page 72 of said records;
- Thence along the southerly and easterly lines of said Peaceful Valley Estates No.2 the following two (2) courses:
- 1) S86°38'16"E, a distance of 483.40 feet;
 - 2) N00°05'19"W, a distance of 461.20 feet to the Point of Beginning.
- Said Parcel contains 160.00 acres more or less.



For and on Behalf of
Pinnacle Land Surveying Co., Inc.
John W. Towner
P.L.S. #25968

PINNACLE LAND SURVEYING, INC.	
925 W. Cucheras, Colorado Springs, CO 80905	
EXHIBIT A	METRO DISTRICT 1
TITLE:	FILE: 03010200WORK.CWG
SCALE: 1" = 500'	DRAWN BY: CAJ
DATE: 7/20/04	CHECKED BY: JMT
	JOB NO. 03010200

EXHIBIT "B"



**LAND DESCRIPTION
 EXHIBIT: METRO WATER DISTRICT #1**

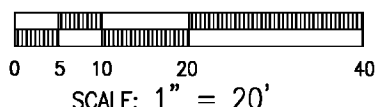
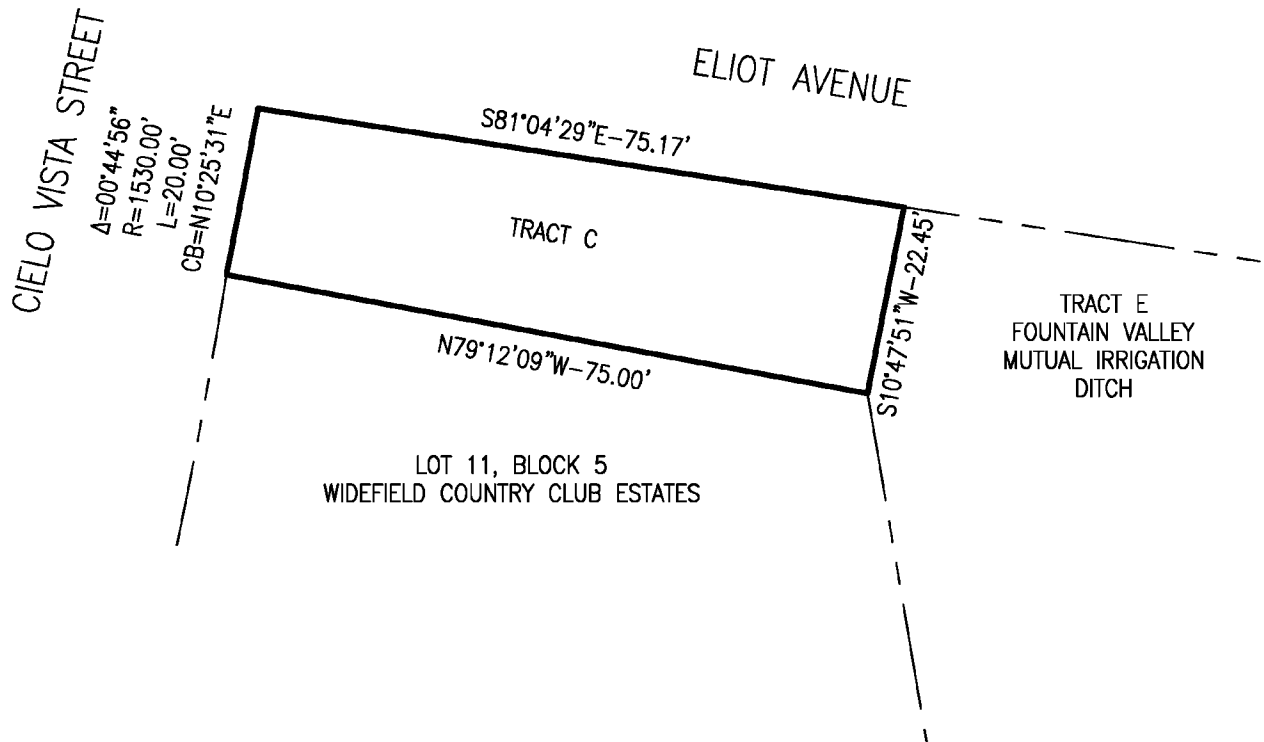
Tract A, Block 9, Wilsons Widefield Addition No. 7 as recorded under Reception No. 658829 of the records of the Clerk and Recorder's Office, County of El Paso, State of Colorado.

Said Parcel contains 13,493 S.F. (0.310 acres) more or less.

For and on Behalf of
 Pinnacle Land Surveying Co., Inc.
 John W. Towner
 P.L.S. #25968

PINNACLE LAND SURVEYING, INC. 121 County Road 5, Divide, CO 80814		
EXHIBIT 'B'		
GLEN METRO DISTRICT NO.1, TRACT A, BLOCK 9		
SCALE: 1" = 30'	DRAWN BY: MWW	FILE: 05010000-METRO.DWG
DATE: 06/06/17	CHECKED BY: JWT	JOB NO. 05010000

EXHIBIT "C"



LAND DESCRIPTION
EXHIBIT: METRO WATER DISTRICT #1

Tract C, Widefield Country Club Heights East as recorded under Reception No. 807399 of the records of the Clerk and Recorder's Office, County of El Paso, State of Colorado.
 Said Parcel contains 1,593 S.F. more or less.

For and on Behalf of
 Pinnacle Land Surveying Co., Inc.
 John W. Towner
 P.L.S. #25968

PINNACLE LAND SURVEYING, INC. 121 County Road 5, Divide, CO 80814		
EXHIBIT 'C' GLEN METRO DISTRICT NO.1, TRACT C		
SCALE: 1" = 20'	DRAWN BY: MWW	FILE: 05010000-METRO.DWG
DATE: 06/06/17	CHECKED BY: JWT	JOB NO. 05010000